

Material used:

- JUWEL Poster 3 L
- JUWEL PosterFix
- Black Soil
- Black Peppels
- Bacopa ,Compact'
- Cryptocoryne beckettii ,Petchii'
- Hygrophila ,Siamensis 53B'



Video
Tutorial



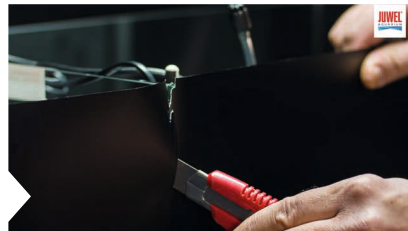
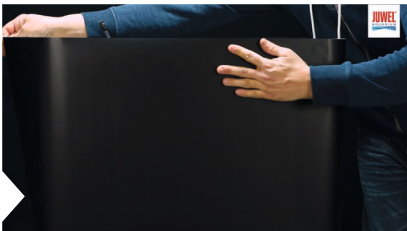
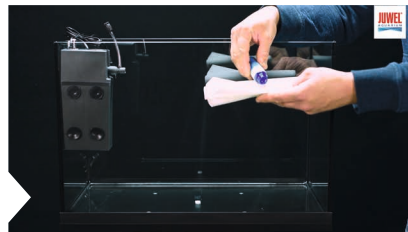
www.juwel-aquarium.com/step-by-step

1. Assemble the cabinet if necessary.

2. Set up your aquarium according to the instructions for use.

3. Assemble the Bioflow One inside filter in accordance with the enclosed instructions and secure it in the aquarium with the enclosed suction cups.

4. Apply JUWEL PosterFix with a cloth to the back of the aquarium and press the desired motif on to the glass. Remove excess poster material with a sharp cutter knife. The poster may be fixed to the back of your aquarium with the help of a spatula using stroking movements so that the poster adheres to the rear of the aquarium as well as possible.



5. Spread the substrate around the bottom of your aquarium to cover it, e.g. using a brush. Black Soil was used in our example.



6. Decorate your aquarium. Place stones, roots or other decorative items in your aquarium. Then you can start planting your aquarium. Make sure that you expose the roots when you unpack the plants. Cut the roots a little from below to enable them to develop and grow faster. Carefully put the plants in place, e.g. with the help of plant tweezers. The presented planting plan was used in our example.



A

Black Pebbels



B

Bacopa
'Compact'

C

Cryptocoryne
beckettii 'Petchii'

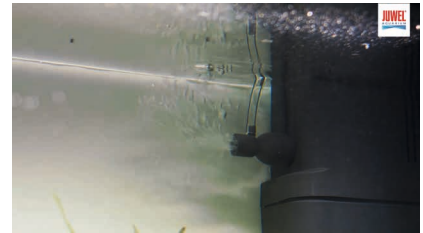
D

Hygrophila
'Siamensis 53B'

7. Cover the newly placed elements with paper towels to protect the layout from being washed out. Fill the aquarium slowly with water up to the level indicator. Remove the paper towels once the aquarium has been filled.



8. Attach the O2 diffuser (with assembled air hose and controller) on to the pump outlet. Connect the circulating pump and the heater to the power supply.



9. Install the cover with integrated NovoLux LED lamp and connect it to the power supply. **Tip:** The Primo 70 aquarium cover allows you to use up to three more **NovoLux LED** lamps to increase the lighting or to create special colour effects in the aquarium.



10. The run-in period of the filter may last 6 - 8 weeks. You may increase the number of fish in steps during this time. **Tip:** **JUWEL bioBoost** is able to significantly cut the run-in period in your aquarium. Billions of filter bacteria will be immediately activated when they come into contact with the water and so enable you to take your aquarium into operation more quickly. bioBoost is available from your specialist dealer.

14 weeks later with CO₂

INFO: This set-up video was realised with the help of Adrie Baumann.
Stones and roots: Colorstone | Plants: Tropica Aquarium Plants