

JUWEL[®]

Instructions for use Vio Cube 54



Introduction

Thank you for choosing a JUWEL Aquarium product.

Our products represent over 50 years experience in the manufacturing of aquariums and their accessories applying most modern production techniques bringing together the JUWEL Aquarium system, which is both easy to use and simple to maintain.

Please read this instruction manual carefully and completely to make sure you have received all components before setting up the aquarium. Please observe the safety instructions and maintenance guidelines given in this manual.

This instruction manual has been carefully prepared to provide you with accurate and complete information. All efforts have been made to ensure that the information given is correct. However, we cannot accept responsibility for printing or other errors. Technical details are always approximate and are not warranted characteristics and may be subject to change without notice.



Safety instructions:

- This appliance can be used by children aged from 8 years and above and persons with reduced physical, sensory or mental capabilities or lack of experience and knowledge if they have been given supervision or instruction concerning use of the appliance in a safe way and understand the hazards involved. Children shall not play with the appliance. Cleaning and user maintenance shall not be made by children without supervision.
- The power plugs of the electrical devices must not become moist. Connect the power plugs to the power supply at such a height that the connection cable forms a loop which would enable the water to drip down.
- At all times, only operate the electrical devices for your aquarium (lighting, heater, pump etc.) using an earth leakage circuit breaker (EL circuit breaker) with a maximum tripping current of 30 mA. If the socket that you are using in your home installation is not safeguarded with such a circuit breaker, please use a commercially available power strip with an integrated earth leakage circuit breaker.
- The electrical devices may only be operated in rooms.
- Pull the power plug of all devices operated in water before coming into contact with the water.



This product fulfils the guidelines issued by the European Union (EU) and is therefore entitled to carry the CE mark.

www.juwel-aquarium.de/en/declaration-of-conformity/

Setting up the Aquarium

We have produced your JUWEL Aquarium with the utmost care using most advanced production techniques. Extra strong packaging has been used to prevent damage to the aquarium. Please note however, that your aquarium has been transported and handled several times prior to reaching its final destination. We recommend therefore, that you test the aquarium for leaks in a suitable area (e.g. garage), by filling it with water and checking it very carefully.

Having made your checks, you should select the most suitable and desirable position for your aquarium. The position selected should have an even and level surface and should be able to support the weight of the filled aquarium. In order to prevent excessive algae growth, we recommend that you select a position that is not exposed to direct daylight.

We strongly recommend that the appropriate JUWEL Aquarium cabinet is used. They have a water-repellent surface and they have been made to match the dimensions and to bear the weight of the filled aquarium. The cabinet must be positioned on a level surface. The JUWEL Aquarium is built with a special bottom frame for security. The aquarium should be placed directly onto the cabinet. DO NOT place any additional support, e.g. polystyrene, under the aquarium since this is not necessary with our aquariums.



Notice:

- Please ensure that any air stones or similar aeration devices used are placed in the centre of the aquarium. The use of such equipment may cause water to splash and condense on the lighting unit and frame, which may then run down on the outer wall of the aquarium. The occurrence of such effects does not constitute a defect in the product.
- Do not transport the aquarium when full.
- Make sure that maintenance of the aquarium does not damage the bonding.
- Do not use any toxic substances to clean the aquarium.

TIPP JUWEL Backgrounds

For decorative designs on the rear wall of your JUWEL aquarium, we recommend the JUWEL rear walls and posters for various sizes of aquariums.

JUWEL rear wall motifs

With an attractive 3D rock motif that creates a powerful impression of depth.

JUWEL textured rear walls

With an attractive and distinctive bark texture.

Juwel Conexo Adhesive

The JUWEL motif and structure back panels are affixed to the rear wall of the aquarium using the special Conexo silicon before it is filled with water.

JUWEL Posters

JUWEL Posters are printed on both sides and provide attractive motifs to create a simple and highly effective background design for your aquarium.

JUWEL Poster Fix

JUWEL PosterFix is an oil that will enhance the three-dimensional effect of your film backgrounds. JUWEL PosterFix prevents unattractive light refraction, thus increasing the colours and structure of your motif to great effect. The poster can be easily removed.

These JUWEL accessories are available from your specialist retailer.



Set-up suggestions for JUWEL aquariums

Let our sample designs inspire you; set up your aquarium in just a few steps.

Follow our step-by-step instructions to create wonderful underwater worlds. Naturally all our suggested set-ups can be used in every JUWEL aquarium. Watch the corresponding set-up video on our website and download the step-by-step set-up plan as a PDF file.



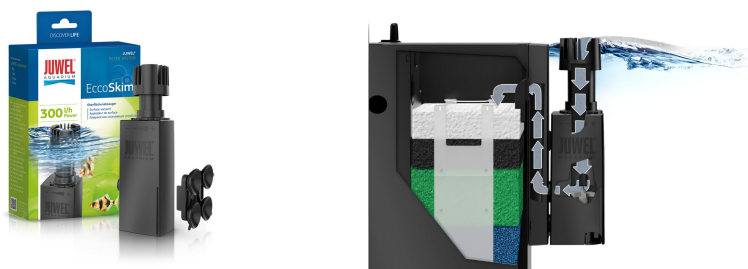
Setting up your JUWEL Aquarium

Perform the following steps when putting the aquarium into operation:

1. Assemble the cabinet if necessary.
2. Arrange the inspected aquarium in a suitable place.
3. Affix the JUWEL structured backgrounds if necessary, please observe the drying time of between 48 and 72 hours.
4. Prepare the filter for operation as described in the chapter "Putting the JUWEL filter system into operation".
5. Complete the decoration with ground material etc. as desired.
6. Plant the short plant species in the aquarium if applicable.
7. Slowly fill the aquarium with water through the filter to half way up.
8. Plant higher plant species in the aquarium if applicable.
9. Slowly fill the aquarium with water through the filter up to the water level line.
10. Connect the circulating pump and the heater to the power supply.
11. Install the lamp unit and connect it to the power supply.
12. If appropriate, close the aquarium with the designated flaps.
13. We recommend introducing fish in steps. You may put in the first fish (4-5) after a few days. These also ensure that the biological filter develops. The run-in period of the filter may last 6 - 8 weeks. You may increase the number of fish in steps during this time.

Notice:

JUWEL EccoSkim combines the benefits of a surface skimmer with a compact design and great adjustable surface-skimming capacities. With a performance of 300 l/h at a consumption of only 4.5 W, the JUWEL EccoSkim guarantees effective surface skimming for freshwater and salt-water aquariums. Film and other surface-active substances are effectively removed and conveyed to the JUWEL filter system and stored there. This can be ordered from your JUWEL Aquarium retailer (Part No. 87025).



JUWEL FilterGrid

The JUWEL FilterGrid prevents very small shrimp and fish from entering the JUWEL Bioflow Filter.

The JUWEL FilterGrid is available as an original accessory (Article Number 87099) for JUWEL aquariums.



The JUWEL filter system Bioflow

The JUWEL filter system Bioflow is a highly effective biological filter system with two stages that includes components complementing each other in an ideal manner. Installing the filter in the aquarium makes hose connections unnecessary and prevents leaks.

The pump output is not negatively affected by hose couplings, intake tubes etc. The capacity of the pump is designed in such a manner that an ideal level of biological filtering is ensured by a sufficient level of percolation through the filter material.

In that context, the large filter volume ensures excellent mechanical filtering and facilitates long cleaning intervals.

The construction of the filter system enables you to quickly access the individual heater, pump, and filter media components. This way, the filter system may comfortably be operated during cleaning and while performing maintenance work.

bioPad - Pre-Filter Wool Pad (white)

The white filter wool acts as a mechanical pre-filter, removing large particles of dirt and excess food which in turn ensures that the other sponges do not get clogged.

bioCarb - Active Carbon Sponge (black)

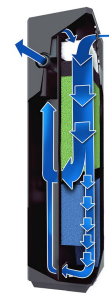
The black activated carbon sponge sits on top of the blue coarse filter sponges, and removes chemical impurities from the water, which cannot be removed biologically.

Nitrax - Nitrate Removal Sponge (green)

The Sponge contains micro-organisms, which will, once developed, reside inside the sponges and in the water. These micro-organisms feed of nitrates and will reduce them significantly. The JUWEL Filtration system provides the optimum housing for these micro-organisms.

bioPlus fine - Filter Sponge Fine (blue)

The fine blue sponge and the bacteria cultures living in them, clean the water of even the smallest impurities. As the sponge has a very fine structure the water will flow through it even slower, allowing the bacteria even more time to perform their function.



BIOFLOW SUPER



BIOFLOW M/L/XL

All Bioflow filter systems are delivered with five top-quality filter media:

1. bioPad – filter wadding (white)

The fleece wadding acts as a mechanical pre-filter. It stops coarse dirt, such as dead plant parts, from penetrating deeper into the filter.

2. bioCarb – activated carbon sponge (black)

The sponge containing bound activated carbon removes toxins from the water, e.g. harmful heavy metals and organic impurities.

4. Nitrax – nitrate remover (green)

The sponge contains micro-organisms that are able to break down nitrates. The JUWEL filter offers a particularly good environment to this end.

5. bioPlus coarse – coarse filter sponge (blue)

The coarse-pored filter sponge in the middle of the filter causes the biological clarification of the water through the accumulation of bacterial cultures.

7. bioPlus fine – fine filter sponge (blue)

The fine-pored filter sponges in the lower section of the filter retain even the smallest suspended particles and ensure crystal-clear water.

Other optional filter media round off the options that are available for the optimum use of your JUWEL inside filter:

6. Amorax – ammonium remover

Amorax is a highly efficient filter medium made of natural zeolite. It quickly and effectively binds ammonium, thereby preventing the formation of ammonia and promotes the vitality of your fish.

3. Carbox – highly effective activated carbon

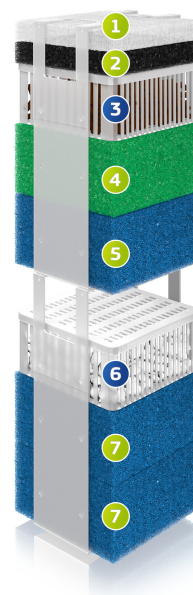
Carbox's excellent absorption properties permanently and quickly bind discolourations, odours and toxic substances and ensure crystal-clear water.

6. Cirax – ceramic granules

Cirax is a biological filter medium which creates the perfect colonisation conditions for useful bacteria, due to its large, highly porous surface.

6. Phorax – phosphate remover

JUWEL Phorax is a highly effective filter medium used to break down phosphates in your aquarium. This effectively reduces the growth of algae and can contribute to improved plant growth.



Getting Started - The JUWEL filter system Bioflow Super

You should prepare the filter for operation prior to setting up the aquarium. However, do not yet connect the electrical components to the power supply.

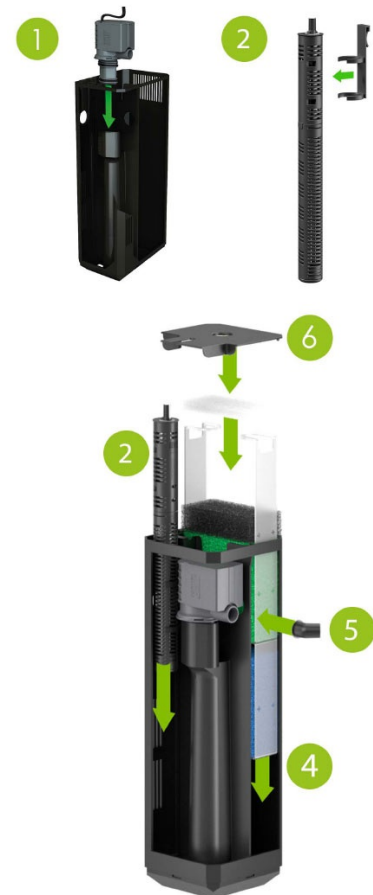
Please observe the following notes regarding commissioning the JUWEL filter system Bioflow Super:

The JUWEL filter system Bioflow Super consists of:

- 1 heater (included in complete aquariums only)
- 1 heater holder
- 1 pump
- 1 white filter wool - bioPad
- 1 carbon sponge, packaged - bioCarb
- 1 green nitrate remover sponge, packaged - Nitrax
- 1 blue filter sponge fine - bioPlus fine

1. Insert the base of the pump into the pump holder of the filter and firmly push it into position. In that context, the pump outlet faces in the direction of the nozzle opening. Confirm the proper arrangement of the gasket in the nozzle opening (it is used to minimize the transmission of vibrations).
2. Click the heater bracket onto the heat and insert both into the guide rails of the filter divider.
3. Now start preparing the filter sponges by removing the plastic packaging from the carbon sponge and the nitrate remover sponge. Thoroughly rinse the blue filter sponge only under running water.
4. After that, insert the blue filter sponge, the nitrate remover sponge, the carbon sponge and the filter wool on top into the filter basket and push it into the filter housing.
5. Carefully attach the nozzle from the outside through the opening to the pump outlet and ensure its firm connection.
6. Place the filter cover on the filter housing.
7. The JUWEL filter system Bioflow Super is now ready for operation.

Please note that the filter system takes approx. 14 days for the blue filter sponges to have formed a bacteria culture which biologically cleans the water.



JUWEL AquaHeat - Operation and maintenance of the heater

The JUWEL Aquarium adjustable heater is an essential component of the JUWEL filter

system. It's positioning within the filter housing and consequently in the water stream facilitates even warming of the water in the aquarium, the Juwel AquaHeat is also particularly energy-saving.

You control the temperature of the water via the adjusting knob in the heater head. You may specify the temperature the heater is supposed to heat the water to in accordance with your individual requirements. The centre position between "+" and "-" corresponds to a water temperature of approximately 23 - 26°C or 74 - 78°F depending on the ambient temperature.

Please note that the JUWEL AquaHeat adjustable heater is designed to heat up to 8°C above room temperature. Please also note that depending on the starting temperature of the water in the aquarium, it may take approx. 12 hours and longer until the heater has heated the water to the desired temperature. After that, the heater will automatically keep the water at the desired temperature and switch on or off, accordingly. The red glowing lamp indicates that the heater is working.

We also recommend that you to check the temperature of the water by means of a thermometer at regular intervals. The heater does not require further care or maintenance.



i Recommendation:

The JUWEL automatic heater warms the water of your aquarium up to 28°C depending on a normal room temperature of 21°C. If you keep your aquarium in rooms below this or your fish need a higher temperature, we recommend to purchase a second heater.



The housing cannot and must not be opened!

i JUWEL DigitalThermometer 3.0

With the digital thermometer 3.0, you can check the water temperature in your aquarium conveniently and precisely. The thermometer is integrated perfectly into the JUWEL design and the large display allows for comfortable temperature readings.

The JUWEL DigitalThermometer 3.0 is available as an original accessory (Article Number 85703) for JUWEL aquariums.



Maintenance of the JUWEL Eccoflow 300 pump

The JUWEL Eccoflow pump should be checked and cleaned at regular intervals (at least once a month).

Please proceed as follows to that end:

1. Disconnect all electrical devices that are operated inside the water from the power grid.
2. Remove the O2 diffuser from the pump outlet.
3. Remove the pump from the filter.
4. Disconnect the adapter (A) from the motor, by turning it anti-clockwise.
5. Remove the impeller and the axle with their rubber bearings from the motor.
6. Thoroughly clean all components.

It is necessary to remove the impeller from the chamber and remove deposits and dirt from the chamber itself as well as the impeller. Using the cleaning brush included with the pump for this purpose. Otherwise the functionality of the pump will be impaired. Also check the impeller for damage and possible signs of wear of the magnet.

7. After that, please reinstall the pump in reverse order in the filter. Before you reconnect the devices that are operated in the water to the power supply.

i Recommendation:

We recommend that you replace the parts subjected to wear and tear, e.g. the impeller, axle and the rubber axle holders, at intervals of approx. 12 months in order to ensure the optimum function and operating quietness of the pump. Inquire at your specialist retailer for assistance.

Recommendation

OxyPlus - O2 Air Diffuser

The special OxyPlus - O2 Air Diffuser provides additional oxygen to the aquarium if desired. This can be ordered from your JUWEL Aquarium retailer (Part No. 85145).



JUWEL cover

With the JUWEL Aquarium cover, you receive a modern, energy-efficient lighting solution that provides optimal illumination for your aquarium while offering convenient access for maintenance during operation.

The JUWEL Aquarium cover includes:

- Cover hood (1)
- JUWEL Novolux LED Neo with plug-in power supply (2)
- One service flap (1) for adding, for example, food and water care products

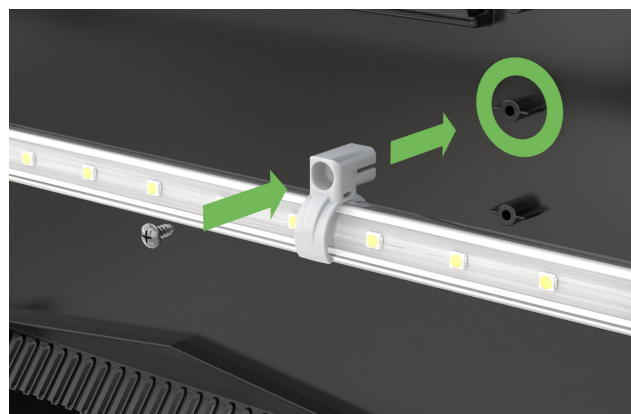
Commissioning the JUWEL cover

Place the supplied brackets on the mounts of the cover hood as shown in the illustration and screw them securely in place.

Next, insert the NovoLux LED Neo into the brackets and place the cover on the aquarium.

Then insert the service flap and connect the cover to the power supply.

Ensure that the upper edge of the aquarium and the guide rails of the service flap(s) are free from any foreign objects such as sand or gravel.



Maintenance and care of the JUWEL cover

Maintenance of the JUWEL cover is extremely simple.

If necessary, we recommend cleaning it with a soft cloth and a mild cleaning agent.

During maintenance and care, always disconnect the NovoLux LED from the power supply.



Lichtquelle austauschbar
Exchangeable light source



TIPP Tip:

The JUWEL cover gives you the option to install additional NovoLux LEDs Neo to increase illumination or create special color effects in your aquarium. For more information, please consult your specialist retailer.

TIPP Automatic feeders



JUWEL offers three different automatic feeders for the convenient feeding of your aquarium inhabitants: the EasyFeed, the SmartFeed 2.0, and the app-controlled SmartFeed AppControl.

You can find all information about functions and item numbers on our website:

www.juwel-aquarium.de



Please recycle as required!

Please do not hesitate to contact our competent administration if you have any questions.

Guarantee

We guarantee the performance of the JUWEL-Aquarium product or its accessories to the purchaser for a period of 24 months from the date of purchase according to the following conditions:

§ 1 Extent of the guarantee

(1) This guarantee extends to the JUWEL-Aquarium product and its components excluding items subject to wear and tear such as T5 and T8 light tubes and filter media. It is limited to the product as such and does not cover damage to other property and/or individuals. In addition, the provisions of the product liability law apply. These provisions are not limited by the aforementioned arrangement.

(2) It is the prerogative of JUWEL-Aquarium to decide whether the guarantee is performed by means of repair or replacement. If neither repair nor replacement can ensure the performance of the JUWEL-Aquarium product the purchaser is entitled to demand a reduction in price or to return the product against repayment of the purchase price.

§ 2 Guarantee period and settlement procedure

(1) The guarantee period begins on the day of the purchase of the JUWEL Aquarium product from the retailer. Claims under this guarantee will not be honoured, if

- (a) the damage is caused as a result of improper use or maintenance or nonobservance of the instructions given in this manual
- (b) the product or its components have been maintained by persons or companies not authorised by the manufacturer to do so
- (c) the product or its components have been damaged by mechanical means of whatsoever kind, in particular broken glass

(2) All claims under this guarantee have to be notified to the retailer, from whom the aquarium has been purchased without delay, however, not longer than 2 weeks from the day of first occurrence of defects. Rights under the consumer protection laws will remain unaffected.

(3) Guarantee claims will only be accepted if the validity of the claim is supported by evidence of purchase of the JUWEL-Aquarium product. This declaration of guarantee is a translation only. In case of doubts the original German language version prevails.

We reserve the right to make technical alterations.

© JUWEL AQUARIUM

® JUWEL, Trigon, Vision, Rekord, Rio, Lido, Vio, Primo, Korall, MonoLux, DuoLux, MultiLux, KoralLux, Violux, NovoLux, PrimoLux, SeaSkim, EccoSkim, AquaHeat, EasyFeed, SmartFeed, High-Lite, Warm-Lite, Colour-Lite, Day-Lite, Juwel Twin-Lite, HiFlex, SmartControl, Juwel EccoFlow, Bioflow, Cirax, Nitrax, Phorax, Carbox, BioPad, BioCarb, BioPlus, bioBoost, OxyPlus, Silexo, Conexo, HeliaLux AppControl, SmartFeed AppControl

JUWEL AQUARIUM AG & CO. KG

Karl-Göx-Straße 1 27356 Rotenburg/Wümme . GERMANY

Phone +49(0)42 61/93 79-32

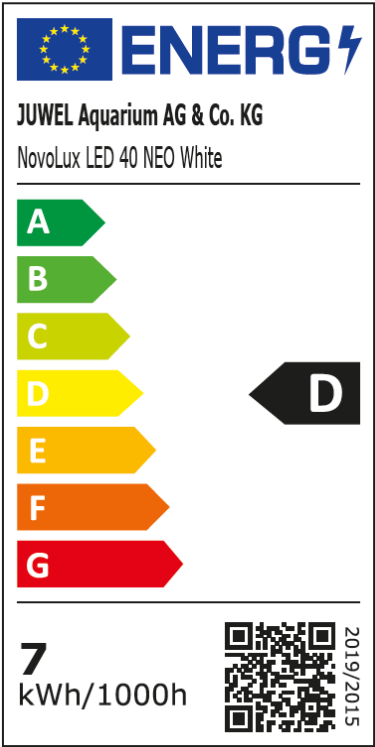
Telefax +49(0)42 61/93 79-856

Service-Mail service@juwel-aquarium.de

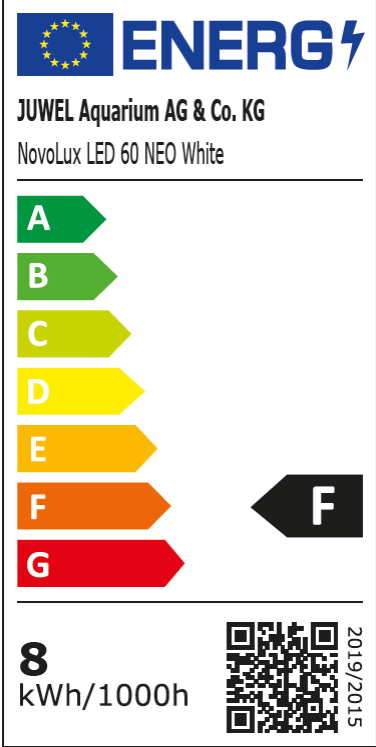
1124

Energy Efficiency Classes

NovoLux LED 40 Neo



NovoLux LED 60 Neo



NovoLux LED 80 Neo

